

LSTHP165GA

Technical Product Submittal



Lochinvar Ltd
8 Lombard Way
The MXL Centre, Banbury
Oxon, OX16 4TJ

+44 (0) 1295 269981
info@lochinvar.ltd.uk

www.lochinvar.ltd.uk

LSTHP165GA

Storage Capacity	Litres	763
EFFICIENCY DATA-Part L2		
Insulation Thickness	mm	100
Insulation Type		Neopor
Standing Loss	kWh/ltr/day	3.2
EFFICIENCY DATA-ErP and Energy Label		
Ecodesign Energy Label rating		N/A
Standing Loss	W	132
GENERAL DATA		
Recovery Rate @ 44°C	l/hr	Use heat source data
Recovery Rate @ 50°C	l/hr	Use heat source data
Recovery Rate @ 56°C	l/hr	Use heat source data
Weight (empty)	kg	216
Weight (full)	kg	979
Minimum Working Pressure	Bar	0.5
Maximum Working Pressure	Bar	8

LSTHP warranty_April 2025

WEEE Producer Registration Number – WEE/MM6751AA

Comply Direct Membership Number – CD01/01363



Registered office: One New Change, London EC4M 9AF | Registered number: 3453820

LSTHP165GA

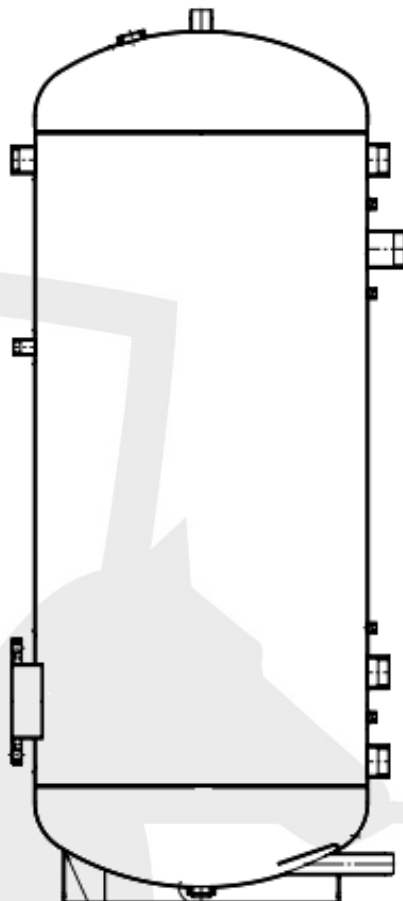
Technical Product Submittal



Lochinvar Ltd
8 Lombard Way
The MXL Centre, Banbury
Oxon, OX16 4TJ

+44 (0) 1295 269981
info@lochinvar.ltd.uk

www.lochinvar.ltd.uk



Size	Description	Unit	LSTHP66GA	LSTHP100GA	LSTHP110GA	LSTHP130HA	LSTHP165GA	LSTHP220GA
A	Total Height	mm	1320	1657	1995	1806	2001	1968
B	Diameter (without insulation)	mm	600	600	600	750	750	900
	Diameter (with insulation)	mm	700	700	700	850	850	1000
C	Height (Cold Feed)	mm	70	70	70	85	85	95
D	Height (Hot Out)	mm	1320	1657	1995	1806	2001	1968
-	Weight (Empty)	Kg	121	114	146	194	216	277
-	Weight (Full)	Kg	433	519	645	872	979	1332
-	Storage Capacity	Litre	312	405	499	678	763	1055

LSTHP warranty_April 2025

WEEE Producer Registration Number – WEE/MM6751AA

Comply Direct Membership Number – CD01/01363



Registered office: One New Change, London EC4M 9AF | Registered number: 3453820